

SIMPONI® SmartJect® Reusable Autoinjector Trainer Guide

Important

If your doctor decides you or a caregiver can inject SIMPONI® (golimumab) at home, you should receive training on the right way to prepare and inject.

Do not try to inject SIMPONI® until you have been shown the right way by your doctor or nurse.

When it is time to inject SIMPONI®, it is important to read, understand, and follow the [Instructions for Use](#) that come with your medication. This trainer guide is not intended to replace those instructions.

Please read the [Medication Guide for SIMPONI®](#) and discuss any questions you may have with your doctor.

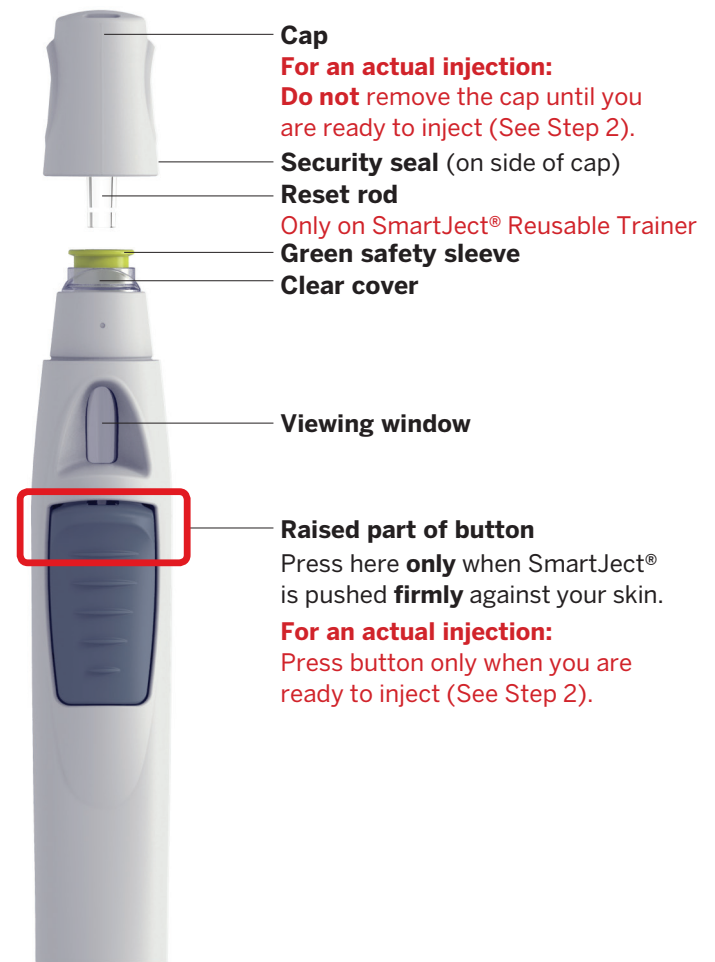
SmartJect® Reusable Trainer does **not** contain medication or a needle. SmartJect® Reusable Trainer allows you to practice giving yourself an injection multiple times.

As a reminder, the single-use SmartJect® autoinjector containing your SIMPONI® medication can only be used **one time**.

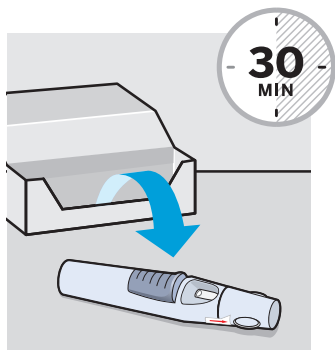
Need help?

For additional questions about the injection process, please call Janssen CarePath at 877-CarePath (877-227-3728) or visit Simponi.com/SmartJect.

Your SmartJect® Reusable Trainer at-a-glance



1. Before an actual injection, you would:



Take out SmartJect®

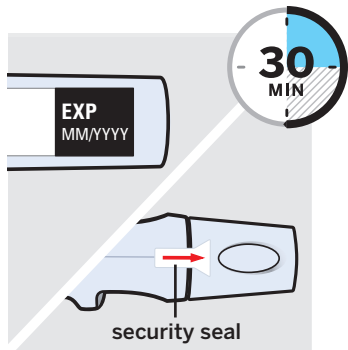
Take SmartJect® out of the refrigerator and remove it from the carton. Place on a flat surface out of reach of children.

SmartJect® should sit at room temperature for **30 minutes** to ensure proper injection.

Do not warm any other way.

Do not shake SmartJect® at any time.

Do not remove the cap yet.



Inspect SmartJect®

Check the expiration date ('EXP') on the back of SmartJect®.

Do not use SIMPONI® SmartJect® if the expiration date has passed. Call your doctor or pharmacist for a refill.

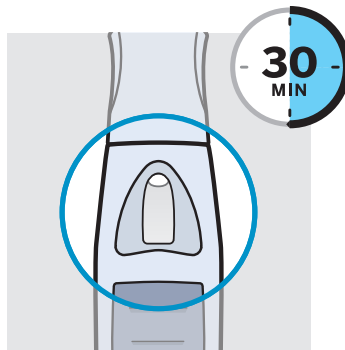
Check the security seal on the cap.

Do not inject if the seal is broken.

Gather supplies

While SmartJect® sits at room temperature for 30 minutes, gather your supplies:

- **1 Alcohol swab**
- **1 Cotton ball or gauze pad**
- **1 Sharps container** (See Step 3)

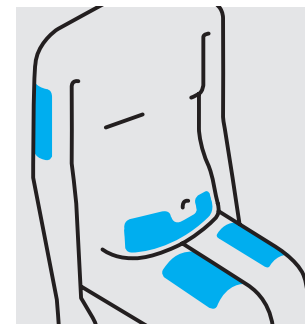


Check liquid in the SmartJect®

After 30 minutes, check the liquid in the viewing window. It should be clear to slightly yellow and may contain tiny white or clear particles.

It is also normal to see a small air bubble.

Do not inject if the liquid is cloudy or discolored, or has large particles.



Choose injection site

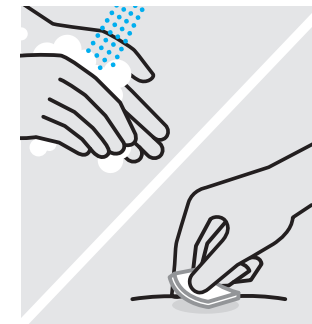
Select from the following areas for your injection:

- **Front of thighs** (recommended)
- Lower abdomen (**do not** use the 2-inch area around your navel (belly-button))
- Back of upper arms (if a caregiver is giving you the injection)

Choose a different site within your preferred area for each injection.

Do not inject into skin that is tender, bruised, red, scaly or hard.

Do not inject into areas with scars or stretch marks.



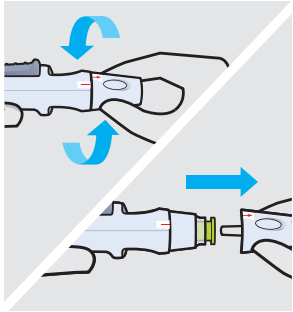
Clean injection site

Wash your hands well with soap and warm water.

Wipe your chosen injection site with an alcohol swab and allow it to dry.

Do not touch, fan or blow on the injection site after you have cleaned it.

2. Practice injecting using SmartJect® Reusable Trainer



Remove cap

Twist and pull to remove the cap.

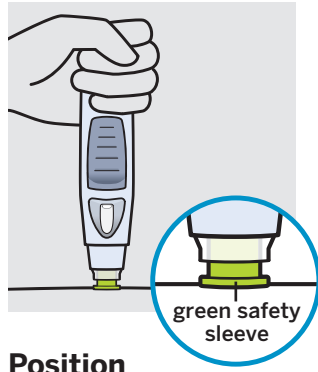
Note: the security arrow shows where the security seal is located on the single-use SmartJect®.

During an actual injection:

Dispose of the cap right away. **It is important to inject within 5 minutes of removing the cap.**

Do not put the cap back on, this may damage the hidden needle.

Do not inject if SmartJect® is dropped **without** the cap on.

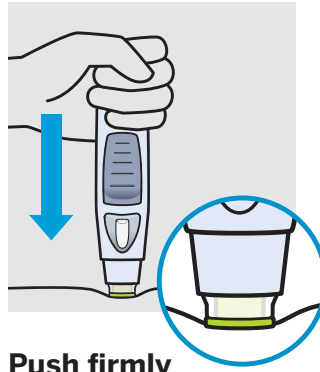


Position

Hold SmartJect® Reusable Trainer comfortably and position it straight onto your skin, as shown.

Make sure the green safety sleeve is flat against your skin and that your injection site is as flat as possible.

Do not touch or press the button while positioning the trainer onto your skin.



Push firmly

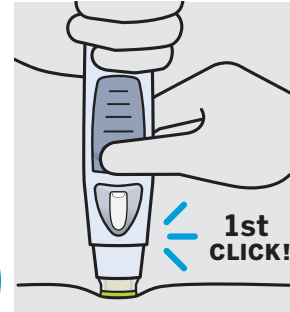
Push SmartJect® Reusable Trainer **firmly** against your skin so the green safety sleeve slides into the clear cover.

Do not touch or press the button while pushing trainer against your skin.



The green safety sleeve helps prevent accidental injections.

You will not be able to press the button to start your practice injection until SmartJect® Reusable Trainer is pushed firmly enough against your skin for the green safety sleeve to slide into the clear cover.



Press button and wait

Keep holding SmartJect® Reusable Trainer firmly against your skin. Use your other hand to press the **raised part of the button** to start your practice injection.

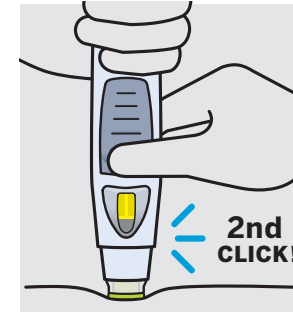
You will hear a **loud 1st 'click'** as you press the button. This is normal.

During an actual injection:

Do not lift SmartJect® up yet! This may result in loss of medication.

After 1 press of the button, you do not need to keep pressure on the button.

Wait for the 2nd 'click' which means your practice injection is complete.



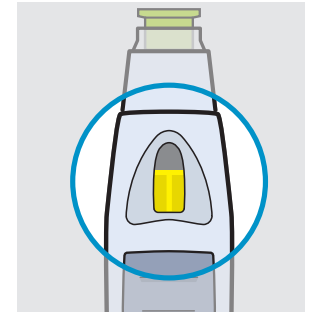
Listen for 2nd 'click'

Keep holding SmartJect® Reusable Trainer firmly against your skin until you hear the **2nd 'click'** (3–15 seconds).

The 2nd 'click' means the practice injection is complete and you can lift the trainer from your skin.

If you have trouble hearing the 'clicks', count to 15 after pressing the button, then lift the trainer off your skin.

If the two 'clicks' are less than 3 seconds or more than 15 seconds apart, request a replacement SmartJect® Reusable Trainer from your doctor, or call Janssen CarePath at 877-CarePath (877-227-3728).



Check the viewing window

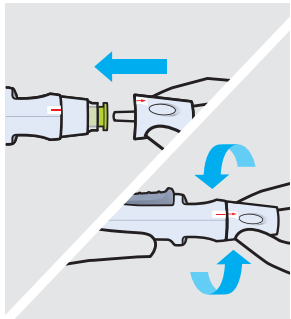
After lifting SmartJect® Reusable Trainer from your skin, look for the yellow indicator in the viewing window to confirm the trainer worked properly. The yellow indicator will fill about half of the viewing window.

During an actual injection:

If you do not see the yellow indicator, call 800-JANSSEN (800-526-7736).

Do not administer a second dose without speaking to your doctor.

cont...



Reset trainer

Align the two parts of the security arrow and push the cap firmly onto SmartJect® Reusable Trainer and twist slightly to secure. Keep your hands clear of the button to allow it to re-engage.

SmartJect® Reusable Trainer is reset when you hear a 'click' and can no longer see the yellow indicator in the viewing window.

You are now ready to do another practice injection!

3. After an actual injection, you would:



Dispose of your SmartJect®

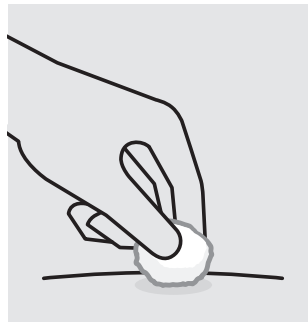
Put your used SmartJect® in an FDA-cleared sharps disposal container right away after use.

Do not throw away (dispose of) loose needles and syringes in your household trash.

Do not recycle your used sharps disposal container.

Need a disposal container?

Call Janssen CarePath at 877-CarePath (877-227-3728) or visit Simponi.com/GetSupport to request your Safe Returns® disposal container.



Check injection site

There may be a small amount of blood or liquid at the injection site.

Hold pressure over your skin with a cotton ball or gauze pad until any bleeding stops.

Do not rub the injection site.

If needed, cover injection site with a bandage.

Helpful tips

If you are having difficulty pressing the button:

- ✓ Make sure the cap is removed.
- ✓ Make sure SmartJect® Reusable Trainer is pushed **firmly** against your skin.
- ✓ Make sure you are pressing the **raised part of button**.
- ✓ Try pressing the button a little harder.
- ✓ Try a different injection site.

If you are pinching the skin to inject:

Use **1 hand** to both position SmartJect® Reusable Trainer against the skin and press the button.

